



3 Lilac Place EASTWOOD NSW

3 2 2

Situated on the high side of the street in a quiet cul-de-sac, this property is being offered to the market for the first time since it was built by the current owner.

Constructed of full brick, with a suspended concrete floor, the house has a versatile layout with a good flow to the outdoor area.

With a frontage of more than 20 metres and a depth of more than 40 metres, the land is not only an excellent size but also possesses a desirable north aspect to rear.

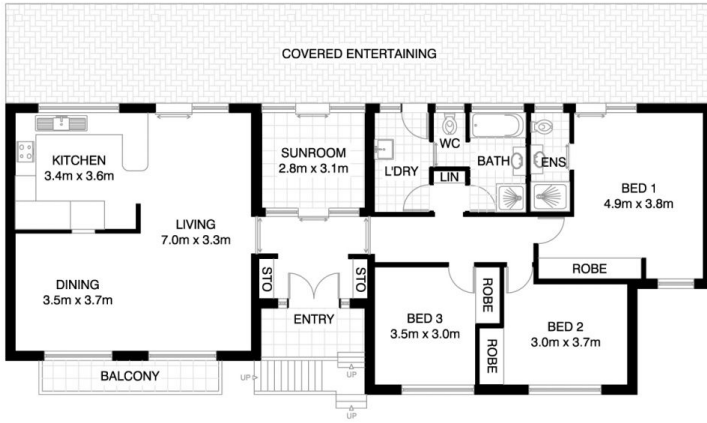
The accommodation is spacious, comprising three bedrooms, two bathrooms and a generous living area.

Although the décor is dated, the home has been well maintained and is very liveable, while still providing the

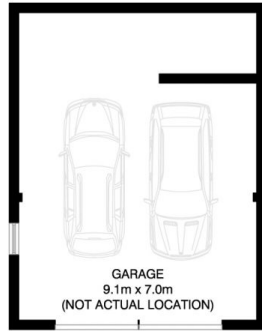
Land Size : 1042 sqm
View : <https://www.tnre.com.au/sale/nsw/northern-suburbs/eastwood/residential/house/7416313>



Julie Rodgers
9449 3075



UPPER LEVEL



LOWER LEVEL



*PLANS SHOWN ONLY INDICATIVE OF LAYOUT. DIMENSIONS ARE APPROXIMATE.
 Floor plan supplied by V-Mark Design Pty Ltd. This floor plan is provided for indicative purposes only.
 Measurements are approximate and not to scale. The vendor, agency and supplier will accept no liability for its accuracy. Interested parties are advised to make their own independent enquiries.



SITE PLAN

EASTWOOD
3 LILAC PLACE
 *INTERNAL FLOOR AREA APPROX 135m²