



6/54-56 Florence Street HORNSBY NSW

2 1 1

Situated on the top floor, in one of the most popular locations in Hornsby, this two bedroom unit has brand new carpet and fresh paint.

With an attractive split level design, the unit is light and airy with a northerly aspect.

Although only two blocks to Westfield and Hornsby Station, the unit is in a quiet, tree-lined street and will appeal to both owner-occupiers and investors.

The main bedroom is generous with a large built-in robe and the bathroom and kitchen have both been updated.

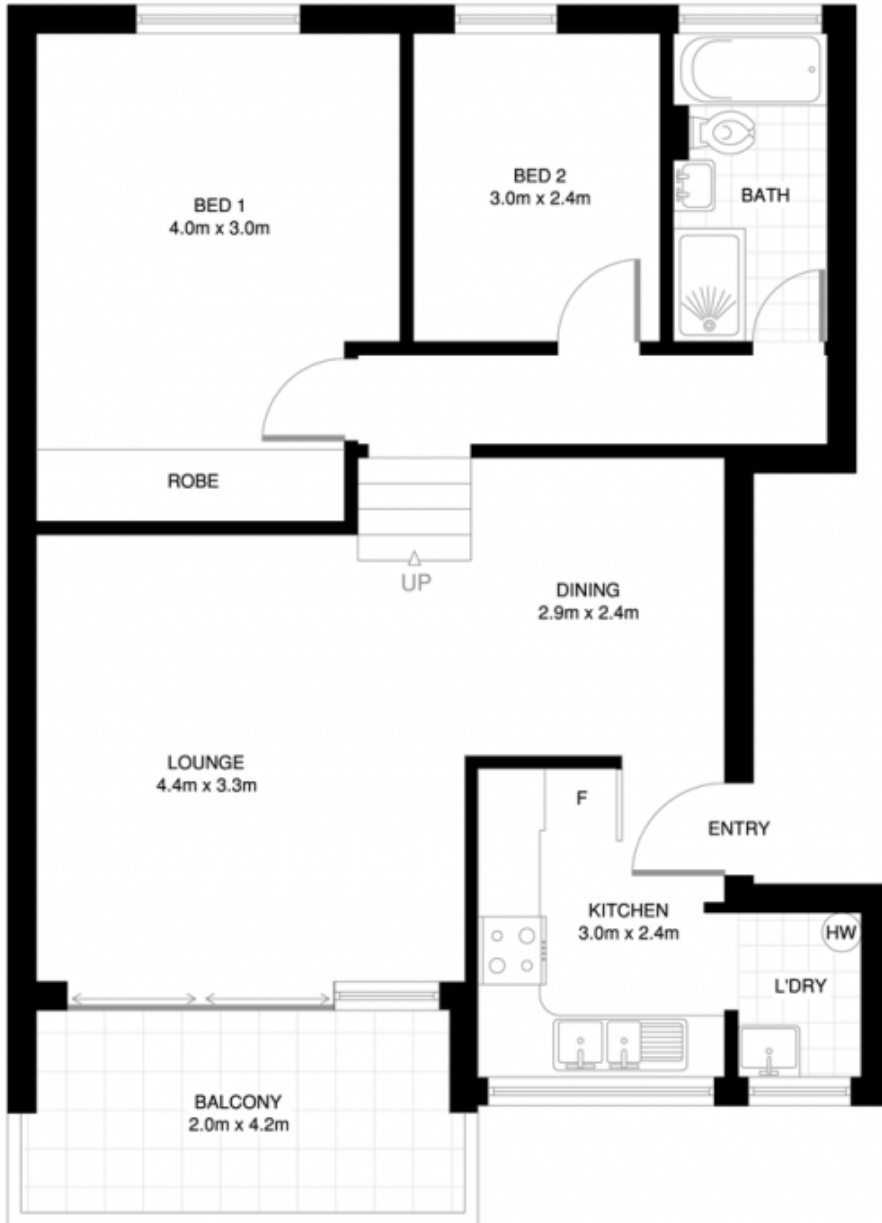
*corner position in block - only laundry and bathroom have common walls

*full brick building

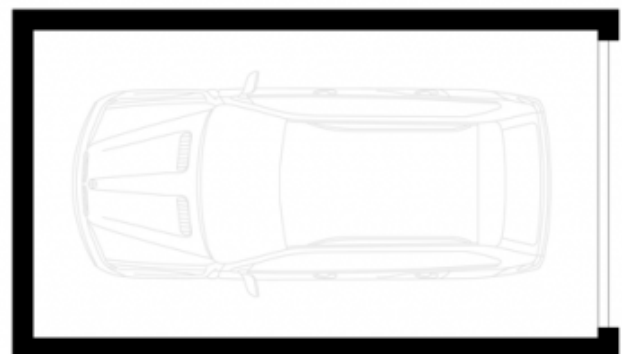
Building Size : 66 sqm
View : <https://www.tnre.com.au/sale/nsw/north-shore-upper/hornsby/residential/unit/7416325>



Julie Rodgers
9449 3075



HORNSBY
6/54 FLORENCE STREET
*INTERNAL FLOOR AREA APPROX 70m²



SECURE LOCK-UP GARAGE
5.5m x 3.0m
(NOT ACTUAL LOCATION)



*PLANS SHOWN ONLY INDICATIVE OF LAYOUT. DIMENSIONS ARE APPROXIMATE.

Floor plan supplied by V-Mark Design Pty Ltd. This floor plan is provided for indicative purposes only. Measurements are approximate and not to scale. The vendor, agency and supplier will accept no liability for its accuracy. Interested parties are advised to make their own independent enquiries.