



803/37 Glen Street MILSONS POINT NSW

2 2 1

With views of the boats bobbing in Lavender Bay and across the harbour to the Anzac Bridge, this unit is conveniently located, being approx. 175 metres to Milsons Point Train Station and approx. 260 metres to the ferry.

It is also close to foreshore walks and the restaurants and cafes of Broughton Street and surrounding area.

Peninsula Towers is a tightly held block and there are only three units per floor.

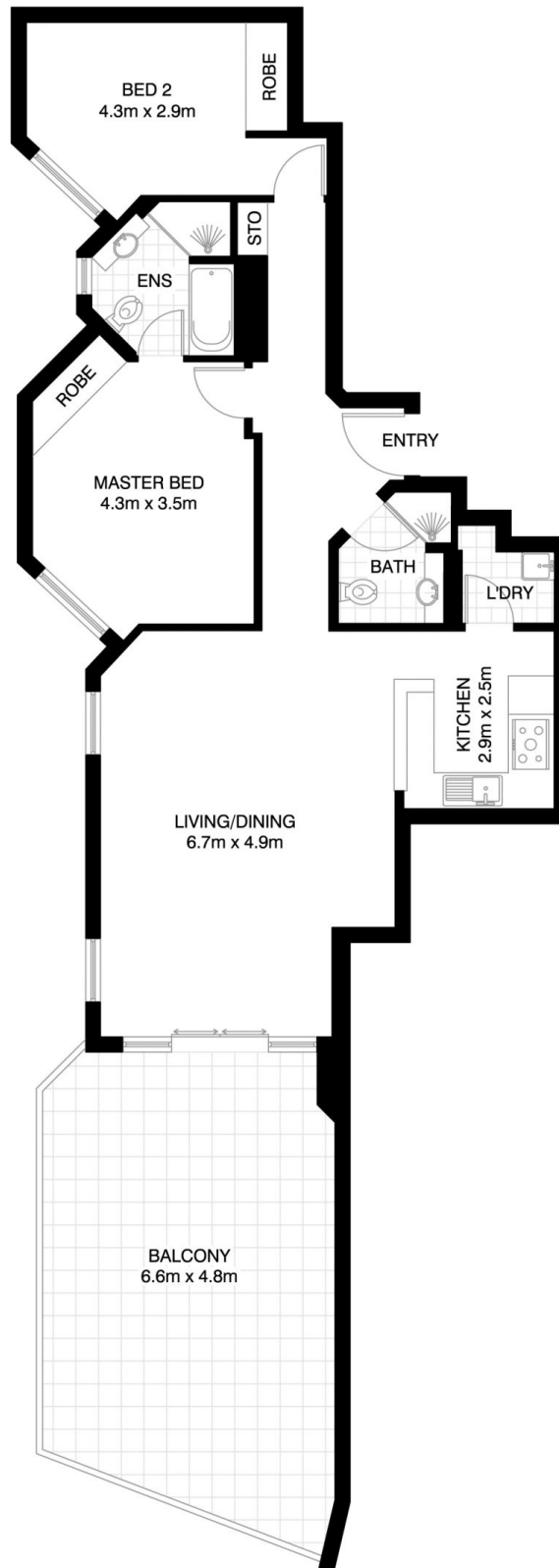
Features include:

- Large entertaining terrace (approx. 30 square metres)
- Open plan living
- Two bedrooms (both bir, main ensuite)
- Granite benchtop and Miele appliances (including gas

Building Size : 91 sqm
View : <https://www.tnre.com.au/sale/nsw/north-shore-lower/milsons-point/residential/apartment/7416335>



Julie Rodgers
9449 3075



MILSONS POINT
803/37 GLEN STREET
*INTERNAL FLOOR AREA APPROX 91m²



*PLANS SHOWN ONLY INDICATIVE OF LAYOUT. DIMENSIONS ARE APPROXIMATE.

Floor plan supplied by V-Mark Design Pty Ltd. This floor plan is provided for indicative purposes only.

Measurements are approximate and not to scale. The vendor, agency and supplier will accept no liability for its accuracy. Interested parties are advised to make their own independent enquiries.